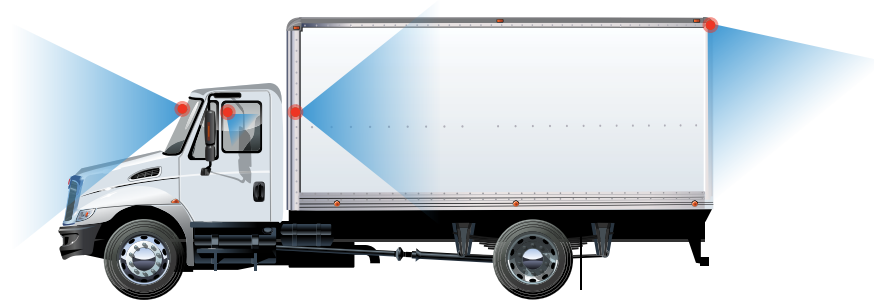
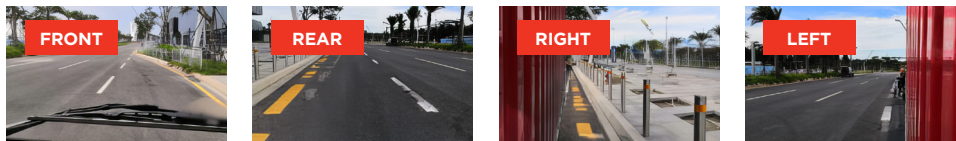




EROAD

EROAD Clarity Edge **Multicam**

Help exonerate innocent drivers and protect your business with side, rear, blindspot and cargo camera options.

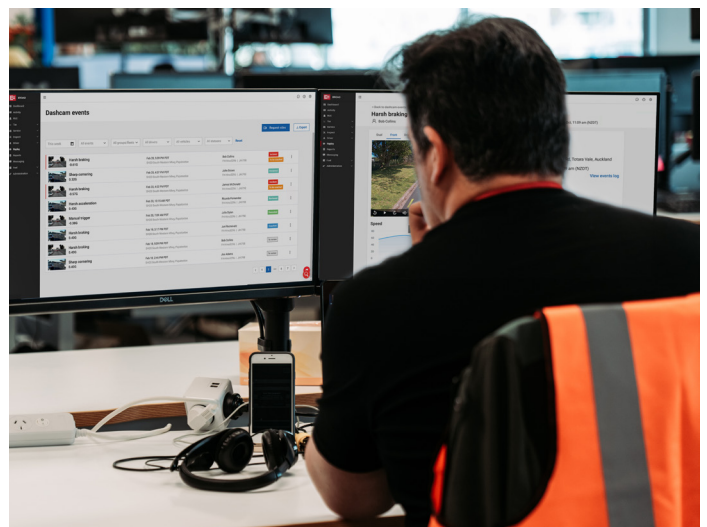


Clarity Edge Multicam supports greater protection, coverage of blind spots, and actionable safety insights - all managed from one easy-to-use platform. Allows you to deliver targeted coaching, and speed up accident investigations, with the option to add up to four additional cameras and in-cab live feed for all-round fleet visibility.

A Flexible Solution For Safety-Focused Fleet Operators

EROAD's Clarity Edge Multicam offers a scalable, 360° camera system with industry-leading fatigue detection and fleet telematics on one platform, assisting fleets with:

- › **Situational Awareness:** Provide drivers and managers with a 360° view around the vehicle to help reduce the risk of accidents caused by blind spots.
- › **Targeted Driver Coaching:** Use clear, objective video evidence of risky behaviors to deliver impactful training and help drivers build safer habits.
- › **Accident Investigation:** Quickly retrieve multi-angle video footage to provide irrefutable evidence for insurance or legal claims, protecting not-at-fault drivers.
- › **Operational Visibility:** Monitor cargo, verify deliveries, and help protect assets from theft or damage with dedicated internal and external cameras.
- › **Safety and Compliance:** Manage your fleet cameras, AI safety events, GPS tracking, and regulatory compliance tools on a single, seamlessly integrated platform.



Key Features



Feature	Functionality
Multi-Camera Expandability	Connect up to four cameras to the Clarity Edge AI dash cam – side, rear, cargo and fatigue. Includes an optional in-cab display for live blind spot or reversing views
Smart In-cab Display	Full-colour LED touchscreen displays live side, rear, and cargo camera views. Tap any feed for full screen. Enhances awareness when reversing, changing lanes, or manoeuvring in tight spaces. Optional integration with vehicle indicators automatically switches to side view with indicator use.
Automatic Clip Upload	Triggered clips automatically uploaded to Replay for easy footage retrieval.
Mosaic View in Replay	Get the full picture when reviewing footage with every camera angle shown side-by-side in Replay.
One Platform	A single web portal for GPS tracking, regulatory compliance, driver safety, and operational visibility.
Reliable Video Capture	Continuous loop recording on all cameras with secure local storage. Event-triggered clips are automatically uploaded to the cloud for rapid retrieval.
Enhanced Driver Coaching	Video events are automatically categorized and paired with telematics data for a simple coaching workflow.
Expanded on-board storage options	Dual SD card slot lets you record high-resolution footage for incident follow-up, plus up to 300 hours ² of backup at lower resolution. Choose your SD card capacity to match your storage and quality needs.

Hardware options

Clarity Edge Multicam requires the **Clarity Edge dash cam**. This completely modular solution can support up to four additional internal or external cameras, including side, rear, cargo, and fatigue-monitoring options to suit your fleet’s needs:



Side rail camera
[IP68]: designed for side monitoring, fitted to rail



Side flush camera
[IP69K]: designed for side monitoring, fitted to vehicle side



Rear camera
[IP69K]: suitable for rear and internal cargo monitoring



Fatigue camera:
fitted in the cab for advanced driver fatigue monitoring



In-Cab Driver Display:
fitted in the cab for a live video feed of the external cameras to the driver.



Video Expander Box:
Required for systems with three to four additional cameras³.



¹ Fatigue detection camera is an available add-on
² Actual footage storage time varies based on SD card size, recording resolution, number of cameras, and the quantity of triggered clips. High-resolution clips are prioritized for retrieval.
³ This is total additional, including side, rear and fatigue cameras. For example, Clarity Edge + one fatigue camera + two side cameras = three additional camera

Talk to us today to learn how EROAD Clarity Edge Multicam can provide a more complete view of your fleet’s safety and operations.

See www.eroad.com, or call 1-855-50-EROAD for more information.