



Asset Tracker
POWERED BY

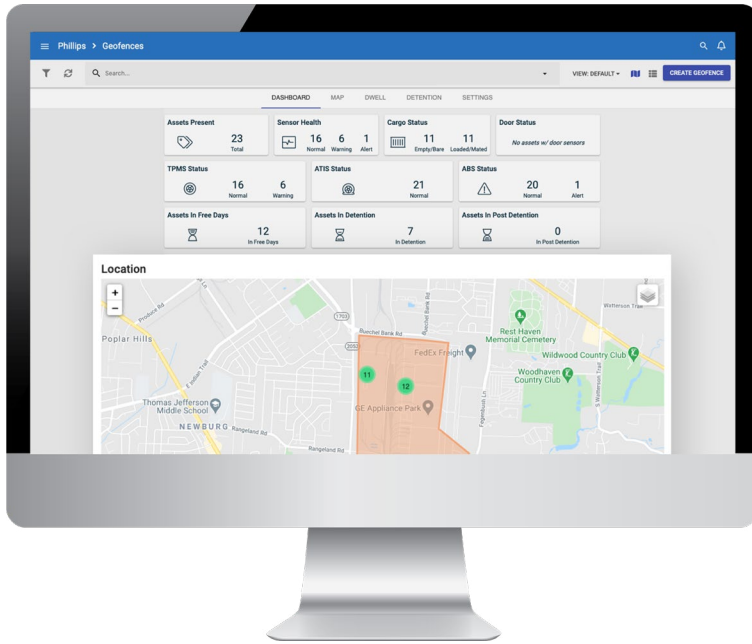
**INSTALLS IN
LESS THAN
10 MINUTES!**

StealthNet™

4G LTE Asset Tracking Gateway

EROAD has partnered with Phillips Connect to provide best in class hardware and a robust platform for real-time tracking, analysis and insights.

Ideal for trailers and chassis. StealthNet is an easily expandable tracking solution designed for the toughest trucking conditions.



Improve driver uptime and overall ROI with a complete view into your fleet.



StealthNet Gateway



StealthNet Installed on Chassis

SOLUTION HIGHLIGHTS

- Real-time visibility and simple geofencing
- Automated alerts configurable in the user interface.
- Unlimited Bluetooth Connectivity - Easily connect sensors to expand insights
- 6 months of reporting (when battery is fully charged and asset is stationary)
- Flawless operation in the harshest temperatures
- 5 minute reporting when in motion
- 2 reports per day when parked

POWERFUL COST SAVING TOOLS

- Do more with fewer trailers
- Optimize trailer pool management
- Automate yard checks
- Covert installations help eliminate trailer theft and cargo loss
- Improve driver satisfaction
- Manage detention billing



Theft Recovery



GPS, Geofencing, Route Tracking



Unlimited Bluetooth Connectivity



10 Minute Installation

StealthNet Part# 77-6900



CELLULAR TECHNOLOGY

- LTE Cat 1
- Integrated high sensitivity antenna
- Auto register to packet network

BLUETOOTH

- Low Energy (BLE)
- Version 4.2

APPROVALS

- FCC 47 CFR Part 15, Part 22, and Part 24

GPS FUNCTIONALITY

Channels	56
Tracking Sensitivity	-162 dBm
Acquisition Sensitivity	-148 dBm
Location Accuracy	2.5 CEP

POWER MANAGEMENT

Battery Type	4 x 18650 Li-ion
Battery Capacity	36Wh (10.6 Ah)
Expected Battery Life	10 Years
<ul style="list-style-type: none"> ✓ Deep Sleep: < 400uW ✓ Energy Per Report < 8mWh ✓ Tracking < 8mW 	

ELECTRICAL

Operating Voltage	10V – 32VDC
Power management modes	Full power, network off, listening mode, deep sleep

ENVIRONMENTAL

Operation Temperature	22°F to 167°F (-30°C to 75°C)
Storage Temperature	-40°F to 167°F (-40°C to 75°C)
Operation Humidity	20% to 90% (non-condensing)
Storage Humidity	10% to 95% (non-condensing)

Designed to meet SAE J1455, SAE 113, and J121

PHYSICAL

Dimensions	6.46in x 3.14in x 1.54in (164mm x 80mm x 39mm)
Weight	.93lbs (420g)

Internal Cellular and GPS Antenna

Visit www.eroad.com/asset-tracker, or call **1-855-503-7623** for more information.