



EROAD TRUCK, TRAFFIC & SATELLITE MAP LAYER

EROAD Truck, Traffic & Satellite Map Layer displays useful information on the Activity screen map, that helps you better plan journeys and improve productivity.

Optimize route planning

Route planning is essential to ensure the safe and efficient movement of your fleet. Trip information and real-time visibility into the location of your vehicles allows you to better manage risks and improve safety.

EROAD Truck, Traffic & Satellite Map Layer displays information on the Activity screen map in EROAD's web application, Depot, which you can use to plan your journey. Multiple map options include physical and legal restrictions for vehicles and loads, warnings for roads, traffic flow and other geospatial options. Your dispatchers can quickly and easily view the height, weight, width and length restrictions for a journey, and plan journeys using traffic flow information. You can also create geofences to help monitor restricted and high risk routes.

KEY BENEFITS

Enhance visibility Map view and layers enhance visibility into the location of your vehicles

Improve productivity Shorten travel times, reduce fuel bills and better plan journeys using traffic flow information

Stay up to date EROAD map data is regularly refreshed, so you're always up to date with the latest road network

The screenshot shows the EROAD web application interface. At the top is a red navigation bar with the EROAD logo and tabs for ACTIVITY, TAX, SERVICE, DRIVER, and REPORTS. Below the navigation bar is a sidebar with tabs for Vehicles, Drivers, Geofences, and a checkbox for Include Trailers. A search bar is present, and a table lists vehicle data. The main area is a map of Norfolk and Portsmouth, showing various streets and landmarks. A map options menu is visible on the right side of the map.

| Status | Name | Last Location |
|-------------|-------|--------------------------|
| 733 - Mike | 10:28 | Canterbury Heights |
| 964 - Rob | 13:38 | Fort Ln, Parkview, Ports |
| 978 - Kurt | 00:36 | Se 31st Ave, Near Port |
| 358 - Noel | 14:16 | Sw Bond Ave, Near Po |
| 688 - Doug | 00:00 | Shetland Pl, Near Wes |
| 942 - Chris | 00:36 | Noble Ln, Near West L |

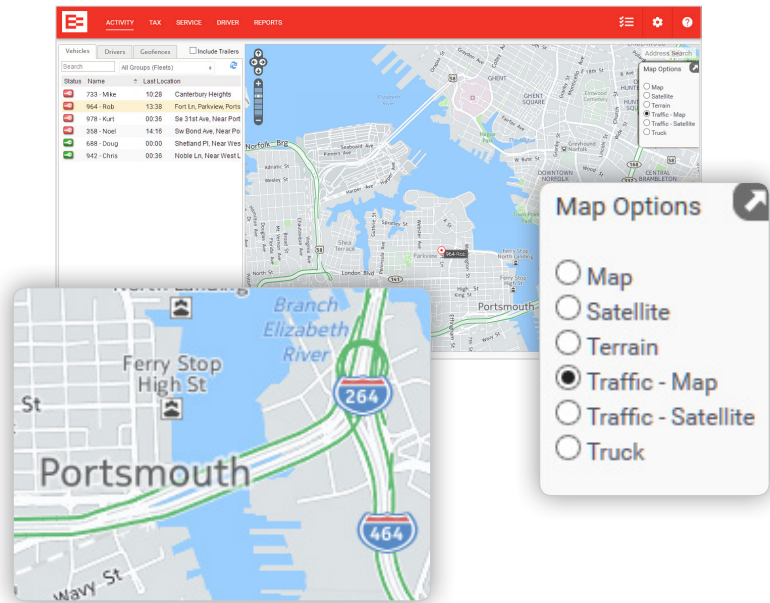
© 2017 EROAD Limited. All rights reserved. | Terms and Conditions

Log out

EROAD TRUCK, TRAFFIC & SATELLITE MAP LAYER

KEY FEATURES

- › Map layers displayed on Activity screen includes map, satellite and terrain layers
- › Height, weight, width, length and Hazmat restrictions displayed by road
- › Ability to create geofences to monitor restricted and high risk routes. Receive email notifications if a driver enters and leaves a restricted area
- › Generate record of travel to ensure compliance with trip restrictions
- › Real-time traffic flow information
- › Physical and legal restrictions and warning information displayed by road
- › Road network data is obtained from various sources for improved accuracy. Posted speed changes are updated every two weeks, with a full data refresh every three months



One end-to-end solution

EROAD truly delivers a best-in-class, advanced fleet reporting solution on a single platform using in-house expertise to build the best electronic fleet solution available on the market.

EROAD puts everything at your fingertips, saving you time and effort at every turn. You can rely on EROAD's powerful set of tools to take control of your tax, compliance, and operational performance – including an FMCSA-compliant ELD, creating a safer work environment for your drivers, and making it easier and faster to accurately track, manage, and share hours of service.

EROAD. Confidence in every mile.

See www.eroad.com/us/products, or call 1-855-50-EROAD for more information.