



**Asset Tracker**  
POWERED BY PHILIPS CONNECT

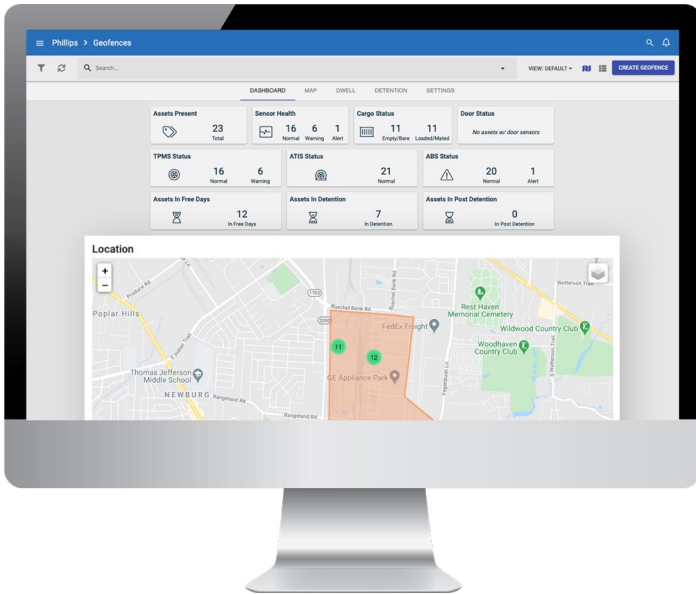
**INSTALLS IN  
LESS THAN  
10 MINUTES!**

# SolarNet™

## Solar Powered 4G LTE Asset Tracking Gateway

EROAD has partnered with Phillips Connect to provide best in class hardware and a robust platform for real-time tracking, analysis and insights.

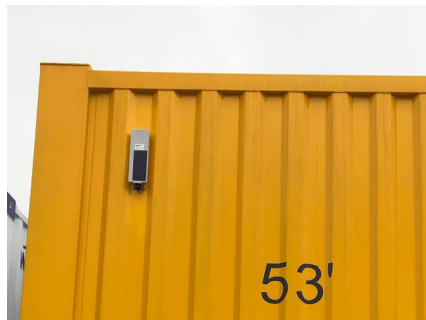
Ideal for trailers, containers, and other assets. SolarNet is designed for the toughest trucking conditions and easily expandable.



Improve driver uptime and overall ROI with a complete view into your fleet.



SolarNet Gateway



SolarNet Installed on Container

### SOLUTION HIGHLIGHTS

- Real-time visibility and location
- Automated alerts configurable in the user interface.
- Unlimited Bluetooth Connectivity - Easily connect sensors to expand insights
- 10-year battery life on solar power
- Optional 7-way charging harness for trailers
- Flawless operation in the harshest temperatures
- 5 minute reporting when in motion
- 2 reports per day when parked

### POWERFUL COST SAVING TOOLS

- Do more with fewer trailers
- Optimize trailer pool management
- Automate yard checks
- Eliminate trailer theft and cargo loss
- Improve driver satisfaction
- Manage detention billing



Theft Recovery



GPS, Geofencing, Route Tracking

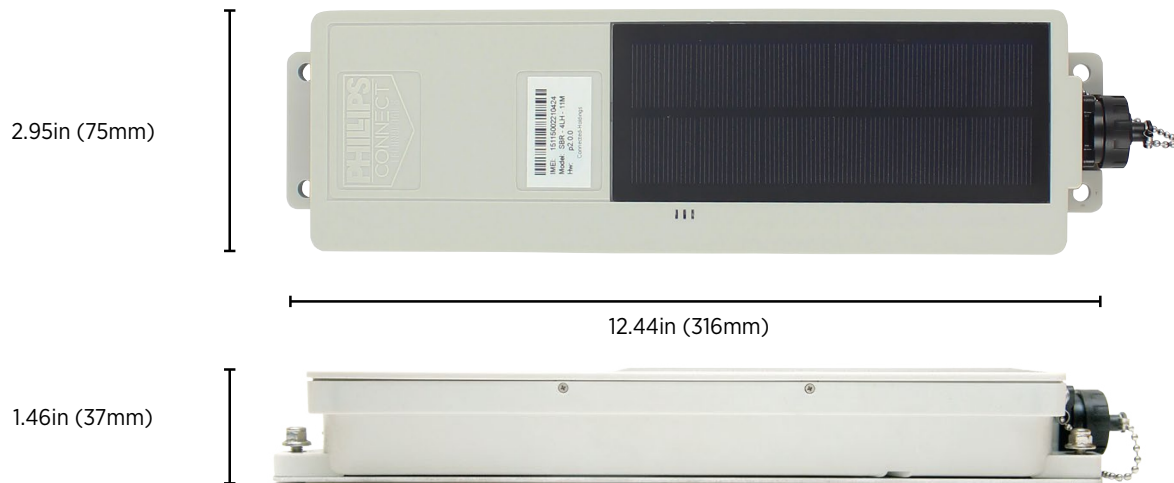


Unlimited Bluetooth Connectivity



10 Minute Installation

# SolarNet Part# 77-6910



## CELLULAR TECHNOLOGY

- LTE Cat 1 on Bands 2, 4, 12, 3G UMTS on bands II, V
- Integrated high sensitivity antenna
- Auto register to packet network

## BLUETOOTH

- Low Energy (BLE)
- Version 4.2

## APPROVALS

- FCC 47 CFR Part 15, Part 22, and Part 24
- PTCRB Certification

## GPS FUNCTIONALITY

Channels	56
Tracking Sensitivity	-162 dBm
Acquisition Sensitivity	-148 dBm
Location Accuracy	2.5 CEP

## POWER MANAGEMENT

Battery Type	4 x 18650 Li-ion
Battery Capacity	36Wh (10.6 Ah)
Expected Battery Life	10 Years
Deep Sleep	< 400uW
Energy Per Report	< 8mWh
Tracking	< 300mW

### Power Management Modes:

- ✓ Full Power
- ✓ Network Off
- ✓ Listening Mode
- ✓ Deep Sleep

## ELECTRICAL

Operating Voltage	10V - 32VDC
-------------------	-------------

## ENVIRONMENTAL

Operation Temperature	-22°F to 167°F (-30°C to 75°C)
Storage Temperature	-40°F to 167°F (-40°C to 75°C)
Operation Humidity	20% to 90% (non-condensing)
Storage Humidity	10% to 95% (non-condensing)

Designed to meet SAE J1455, SAE I13, and J121

## PHYSICAL

Dimensions	12.44in x 2.95in x 1.46in (316mm x 75mm x 37mm)
Weight	.93lbs (420g)
Internal Cellular and GPS Antenna	
Optional Tethered Harness	Part# 77-6940

Visit [www.eroad.com/asset-tracker](http://www.eroad.com/asset-tracker), or call 1-855-503-7623 for more information.