



**Asset Tracker**  
POWERED BY

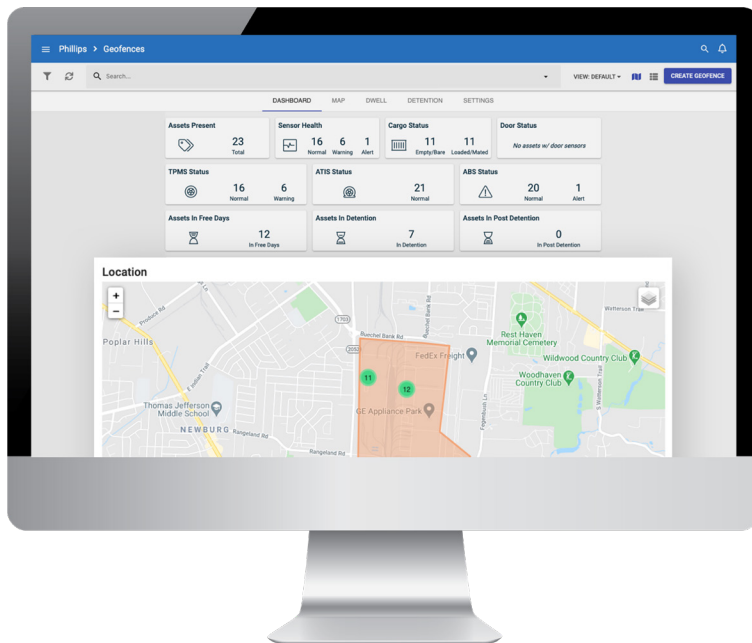
**CELLULAR TRACKING WITH INTEGRATED POWER SOURCE**

# AssetTrac™

## Track your assets, no tools required!

EROAD has partnered with Phillips Connect to provide best in class hardware and a robust platform for real-time tracking, analysis and insights.

Ideal for any powered or non-powered assets. AssetTrac™ is a 4G LTE tracking solution designed for the toughest conditions.



Improve driver uptime and overall ROI with a complete view into your fleet.



AssetTrac™



AssetTrac™ Installed on asset

### SOLUTION HIGHLIGHTS

- Manage and view your assets in the user interface
- Complete visibility and simple geofencing
- Automated alerts configurable in the user interface
- 3+ years of operation and up to 5,000 reports, depending on use
- Customizable behavior
- Flawless operation in the harshest temperatures (-22°F to 158°F)
- Hourly reporting when in motion
- 2 reports per day when parked

### POWERFUL COST SAVING TOOLS

- Do more with fewer assets
- Covert installations help eliminate asset theft and loss



Theft Recovery



GPS, Geofencing, Route Tracking



Waterproof



2 Minute Installation

# AssetTrac™ Part# 77-6950



## CELLULAR TECHNOLOGY

- LTE Cat 1 (bands 2, 4, 12)
- HSPA Fallback Bands 2, 5
- Integrated high sensitivity antenna
- Auto register to packet network

## APPROVALS

- FCC 47 CFR Part 15, Part 22, and Part 24
- PTCRB Certification

## GPS FUNCTIONALITY

Channels	56
Tracking Sensitivity	-162 dBm
Acquisition Sensitivity	-148 dBm
Location Accuracy	2.5 CEP

## POWER MANAGEMENT

Battery Type	3 x AA Li-SOCI2
Battery Capacity	29Wh
Power Management Modes:	<ul style="list-style-type: none"> <li>✓ Continuous Tracking</li> <li>✓ Listening Mode</li> <li>✓ Deep Sleep</li> </ul>
Power Consumption:	<ul style="list-style-type: none"> <li>✓ Deep Sleep &lt; 200uW</li> <li>✓ Energy Per Report &lt; 4mWh</li> </ul>

## ENVIRONMENTAL

Operation Temperature	-22°F to 158°F (-30°C to 75°C)
Storage Temperature	-40°F to 113°F (-40°C to 45°C)
Operation Humidity	20% to 90% (non-condensing)
Storage Humidity	10% to 95% (non-condensing)

## PHYSICAL

Dimensions	5.51in x 3.7in x .79in (140mm x 94mm x 20mm)
Weight	0.51lbs (231g)
IP67 Enclosure	
Internal Cellular and GPS Antenna	
Optional external 12V power adapter available	